

4

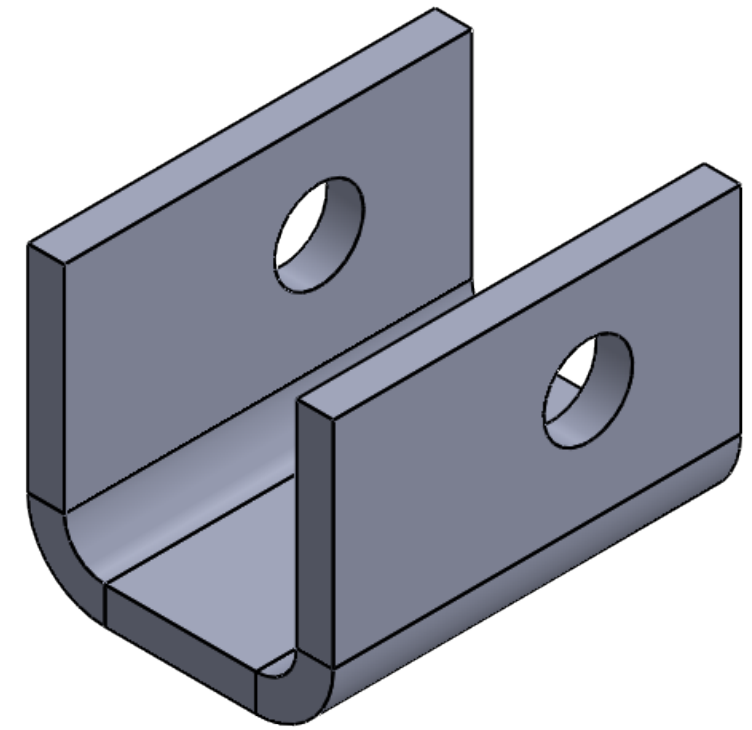
3

2

1

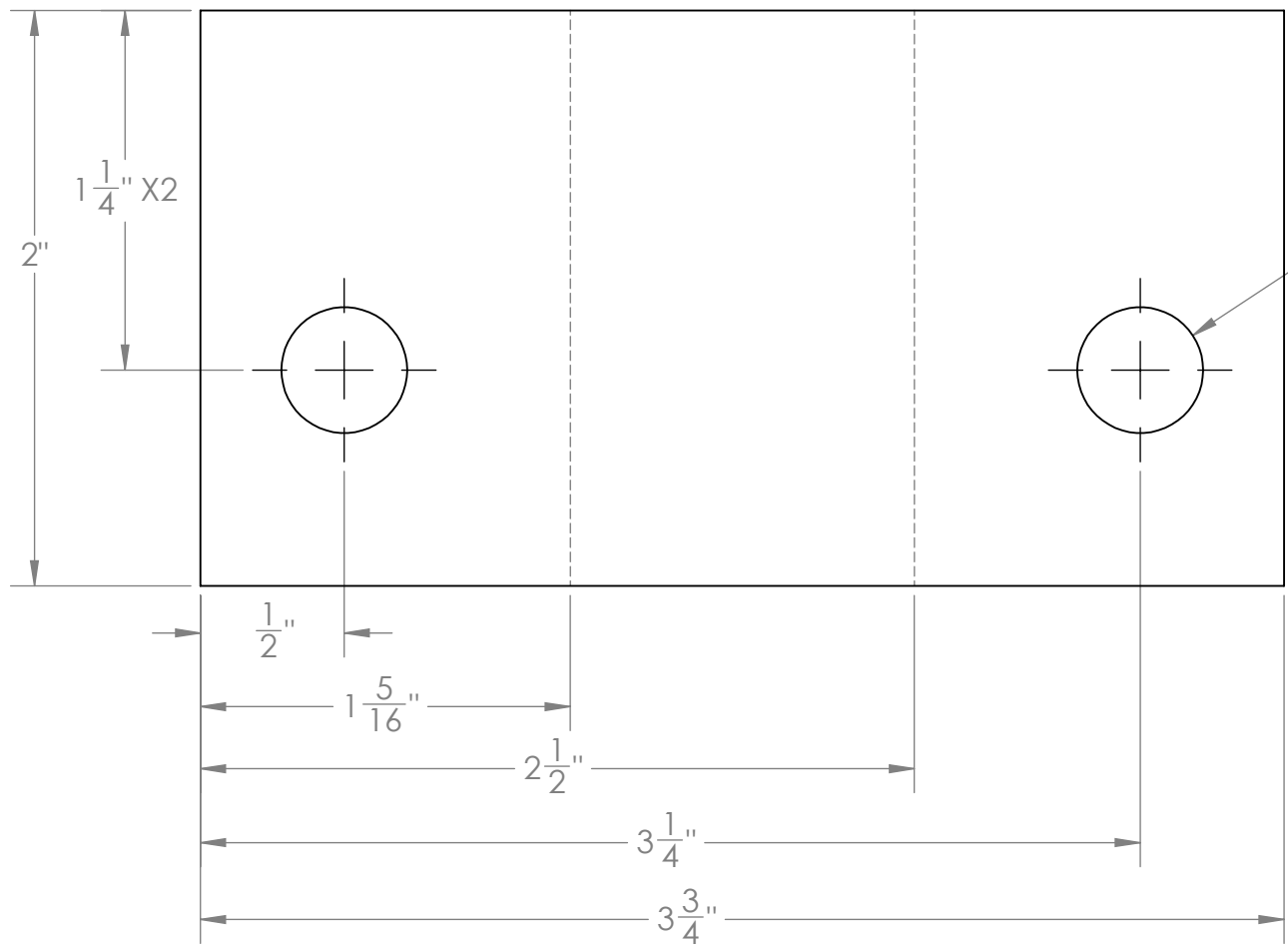
B

B



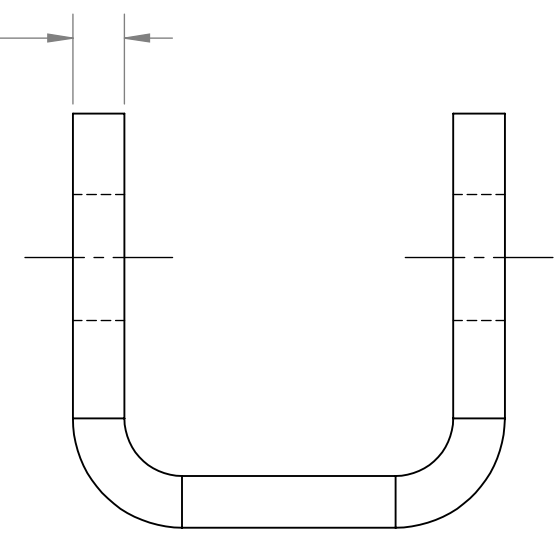
DOWN 90° R 3/16"

DOWN 90° R 3/16"



$(\frac{3}{16})$

$\phi \frac{7}{16}$ " x 2



A

A

4

3

2

1

**PROPRIETARY AND CONFIDENTIAL**  
 THE INFORMATION CONTAINED IN THIS DRAWING IS THE SOLE PROPERTY OF SKILLS USA UTAH FABRICATION. ANY REPRODUCTION IN PART OR AS A WHOLE WITHOUT THE WRITTEN PERMISSION OF SKILLS USA UTAH FABRICATION IS PROHIBITED.

UNLESS OTHERWISE SPECIFIED:		NAME	DATE
DIMENSIONS ARE IN INCHES		DRAWN	BB
TOLERANCES:		CHECKED	1/9/19
FRACTIONAL $\pm 1/16$ "		ENG APPR.	
ANGULAR: MACH $\pm 1^\circ$ BEND $\pm 1^\circ$		MFG APPR.	
TWO PLACE DECIMAL $\pm 0.03$		Q.A.	
THREE PLACE DECIMAL $\pm 0.036$			
INTERPRET GEOMETRIC TOLERANCING PER:			
MATERIAL			
FINISH			
DO NOT SCALE DRAWING			

SKILLS USA UTAH		
TITLE:		
2019 WELDING FABRICATION PROJECT "GTAW TABLE"		
SIZE	DWG. NO.	REV
<b>B</b>	Handle Bracket	<b>1</b>
SCALE: 1:1	WEIGHT:	SHEET 1 OF 1